

AI TAKAMUL COMPANY FOR ENGINEERING TESTS AND PROFESSIONAL SAFETY LIMITED

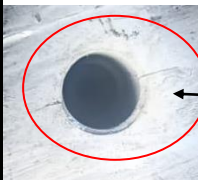
Basra, North Rumaila, Quality Control Yard - Iraq
Tel: +9647810009138 / +9647834964657



REJECTED TOOL INSPECTION CERTIFICATE OF 8 1/4" MAIN BODY#WES825BP511

Client Name:	AL-ESNAAD OIL TOOL FOR OIL SERVICES.LLC	Report No.:	QC-06-24-0180-02
Acceptance criteria:	DS-1, Volume 4 Fifth Edition	Date of Inspection:	14,June.2024
Work Location:	AL-ESNAAD OIL TOOL FOR OIL SERVICES.LLC	RIG NAME:	AL-ESNAAD
TEST EQUIPMENT & CONSUMABLE DETAILS			
WHITE CONTRAST WCP-2	Batch #: 220602 Manufacture: Magnaflux Exp Date: JUN,2025	TECHNICAL DETAILS	Wet Visible Continuous
BLACK INK 7HF	Batch#.220605 Manufacture: Magnaflux Exp Date: JULY.2025	COIL(1200 AMP-TURNS/IN	SC 22713 Cal.15.FEB.2024 Cal Due14.AUG.2024
FLUORESCENT 14HF	Batch #: 220306 Manufacture: Magnaflux Exp Date: March.2025	A.C HAND YOKE	201504053 Cal.15.FEB.2024 Cal Due14.AUG.2024
INTENSITY METER	SR#1608000134 CAL.Date Cal. 15.FEB.2024 Cal Due 14.AUG.2024	UV BLACK LIGHT	SR#1900084 Cal.15.FEB.2024 Cal Due14.AUG.2024
LEAD GAGE	SR#AH07KF0027 GAEMAKER LG-5003 Cal. 13.FEB.2024 Cal Due 12.AUG.2024	THREAD PROFILE GAGE	SR#21336 Cal. 13.FEB.2024 Cal Due 12.AUG.2024 SR#21335 Cal. 15.FEB.2024 Cal Due 14.AUG.2024
Magnetic Partical Concentration 7 HF	1.2 TO 2.4 ML/100 ML	WMPT Light Intensity	3450 Lux
Magnetic particle concentration flourcent 14 HF	0.1 TO 0.4 ML/100 ML	UV LIGHT INTENSITY:	3030 μw/cm ²
MAGNITISUM DIRECTION (LONGITUDENAL)			
METHODOLOGY:	<ul style="list-style-type: none"> • Through Visual inspection • Dimensional •MPI inspection with Ultraviolet light 		

Serial No.	Description	Connection		Result Inspection			Dimensional 3 Inspection														
		Pin	Box	Pin	Box	Body	Pin						Box				Body				
							OD(In)	ID(In)	SRG φ(In)	SRG ϖ(In)	Pin λ(In)	Bevel φ(In)	OD(In)	CB φ(In)	CB δ(In)	BB φ(In)	BB δ(In)	Bevel φ(In)	Pin T λ(In)	Box T λ(In)	Overall λ(In)
WES825BP825	8 1/4" MAIN BODY	6 5/8"Reg	6 5/8"Reg	Acc.	Acc.	CR	8 3/16"	3 1/2"	5 3/8"	3/4"	5"	7 11/16"	8 3/16"	6 1/16"	5/8"	--	--	7 11/16"	--	--	48 13/16"



CRACK BODY



Conclusion: ■ 8 1/4" MAIN BODY was found 2-Port Area Crack At time of Inspection Tool Rejected – (Junk)

Abbreviations :

OD Outside Diameter	ID Inside Diameter	SRG Stress Relief Groove	CB Counter Bore	BB Bore Back	FB Float Bore	
φ Diameter	λ Length	ϖ Width	δ Depth	NP. Not Present	NA. Not Applicable	
EGR Elevator Groove Recess	SGR Slip Groove Recess	CR Crack	B Bent	PC Premium Class	RF Reface	
GT Galled Thread	TP Thread Pitting	SP Seal Pitting	TD Thread Damage	SD Seal Damage	M Mashed	
1 100 % Coating	2 99-71 % Coating	3 70-40 % Coating	4 Up to 40 %	5 Nil	WT Wall Thickness	
Colors Code:		White No Defects	Red Crack or Extreme Damage.	Blue Damage	Green Seal Damage	Yellow ACFM

Inspector:	M.SARWAR	Review By				
Qualification:	ASNT Level II (M)	Senior Inspector:	RAO SOHAIL	Supervisor:	NA VEED HUSSAIN	Customer Name:
Signature:						Customer Signature:

Original - Client Files

Copy - Area Office

QC/FN/FLS/03 Rev.00

Dated: 07 Nov 2021

